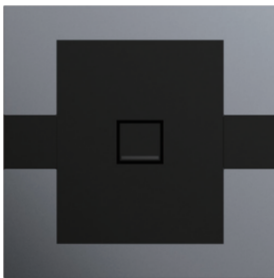


LTECH

Network Panel

Model: GNT



Manual

www.ltech-led.com

Product Introduction

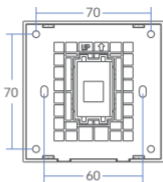
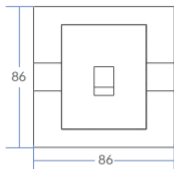
- The metal cover plate can be customized in eight colors. With a Bauhaus style, it interprets the minimalist design aesthetics.
- The self-locking dust cover protects the network port, preventing moisture and oxidation.
- It enables high-speed transmission. The Category 6 network port socket supports a transmission rate of up to 1000Mbps.
- It has better anti-interference performance, improving the reliability of data transmission.
- In terms of compatibility, the Category 6 socket is downward compatible with previous Ethernet standards.
- The convenient pressing installation method for network cables can greatly improve the work efficiency of wire connection.
- The design of the Category 6 network port socket is similar to that of the previous Category 5 socket, and it is compatible with both the national standard back box and the European standard back box.

Technical Specs

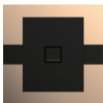
Model	GNT
Supported Cable Specs	Cat6 Cables
Port Quantity	Single Port
Working Temperature	-20°C~55°C
Standards	GB/T 17466.1
Net Weight	63g
Dimensions	86×86×39.5mm (L×W×H)
Package Size	102×102×70mm(L×W×H)
Colors	Lamborghini Gold/Bugatti Black/Ferrari Red/Pagani White
	Maserati Gray/Alfa Romeo Silver/24-Karat Gold/Noble Silver

Product Size

Unit:mm



Color Matching



Lamborghini Gold



Bugatti Black



Ferrari Red



Pagani White



Maserati Gray



Alfa Romeo Silver



24-Karat Gold



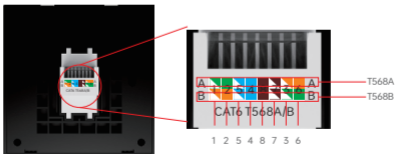
Noble Silver

Installation Steps

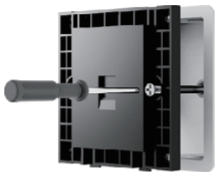
- ① Confirm that there are no attachments such as cement on the inner wall of the junction box. Trim the length of the network cable in the junction box to about 5 cm. Use a flat head screwdriver to pry open the Network Panel.



- ② Strip the outer protective layer of the network cable, being careful not to damage the inner cores. After stripping the cable, arrange the eight wires in order according to the selected wiring standard (T568A or T568B). Place the arranged cores into the corresponding wiring slots of the network module in color order. Press each core firmly after inserting it to ensure that each core is in close contact with the metal contacts of the module.
Note: Generally, Category 6 cables following the T568B standard are used.



- ③ Fix the base box into the wall junction box with screws, ensuring that the base box fits closely against the wall surface.



- ④ Just tilt the panel and snap it onto the base box.



Attentions

- Product installation and commissioning should be done by a qualified professional.
- LTECH products are and not lightningproof non-waterproof (special models excepted). Please avoid the sun and rain. When installed outdoors, please ensure they are mounted in a water proof enclosure or in an area equipped with lightning protection devices .
- Good heat dissipation will prolong the working life of products. Please ensure good ventilation.
- Please check if the working voltage used complies with the parameter requirements of products.
- The diameter of wire used must be able to load the light fixtures you connect and ensure the firm wiring.
- Before you power on products, please make sure all the wiring is correct.
- If a fault occurs, please do not attempt to fix products by yourself. If you have any question, please contact your suppliers.



It's only suitable for safe use in areas with an altitude of 2000m and below.

Warranty Agreement

- Warranty periods from the date of manufacture: 2 years.
- Free repair or replacement services for quality problems are provided within warranty periods.

Warranty exclusions below:

Following conditions are not within the guarantee range of free repairing or replacement services:

- Beyond warranty periods.
 - Any artificial damage caused by high voltage, overload, or improper operations.
 - Products with severe physical damage.
 - Damage caused by natural disasters and force majeure.
 - Warranty labels and barcodes have been damaged.
 - No any contract or invoice signed by LTECH .
1. Repair or replacement provided is the only remedy for customers. LTECH is not liable for any incidental or consequential damage unless it is within the law .
 2. LTECH has the right to amend or adjust the terms of this warranty. The warranty that issues in writing shall prevail.
- * This manual is subject to changes without further notice. Product functions depend on the goods. Please feel free to contact our official distributors if you have any question.