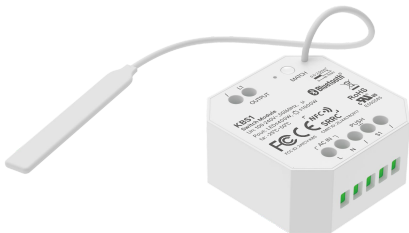


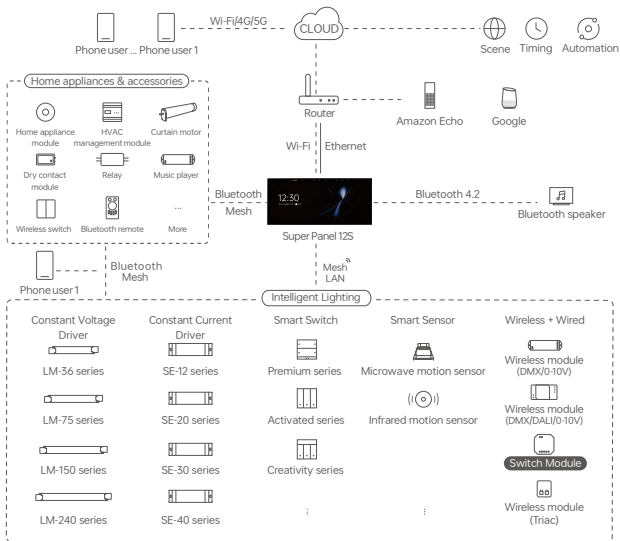
Switch Module

Model: KBS1



Manual

System Diagram



Product Introduction

- Bluetooth 5.2 SIG Mesh communication protocol, offering strong networking capabilities, reliability, and stability.
- Supports both mechanical and reset switches, enabling app control even when manually turned off to meet diverse needs; supports power-on or power-off scenarios for hotel-style applications.
- Supports power-on or power-off scenarios to accommodate hotel-style usage scenarios;
- Supports OTA (Over-the-Air) online upgrades, ensuring timely feature updates and usage safety, keeping the product up-to-date.
- Supports direct connection of mobile phones to devices, enabling direct control of devices through the L-Home app;
- Supports gateway-free control, enabling LAN remote control, wireless panels, group control, and more.
- Supports integration with a smart gateway to enable remote control of home devices, making life more convenient.
- Compact size, allowing easy installation in European, American, and national standard junction boxes, suitable for various installation scenarios.
- Supports power-off reset functionality and mechanical key reset functionality.

Technical Specs

Model	KBS1
Wireless type	Bluetooth 5.2 SIG Mesh
Switch channel	1CH
Operating voltage	100-240V~, 50/60Hz, μ
Max. load parameters of the relay	Resistive load: 1000W@230Vac, 500W@110Vac Capacitive load: 400W@230Vac, 200W@110Vac
Relay surge current	70A@10ms
Working temperature	-25°C~50°C
Product size	L45×W45.5×H20.5(mm)
Product weight	30g
Standards	UL 8750、EN 61347-2-13:2014+A1:2017、EN 61347-1:2015+A1:2021、EN 62493:2015/A1:2022



Bluetooth®

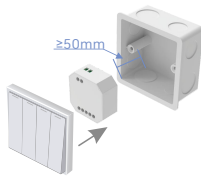
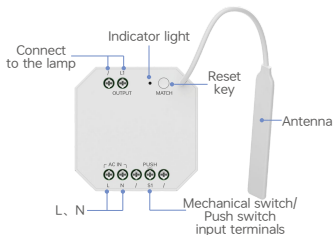


RoHS

SRRC



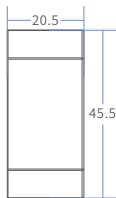
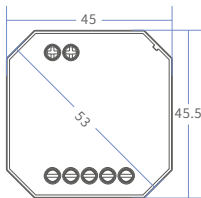
Product Images



Hide this product inside a junction box.
*Requires installation in a box with a depth of $\geq 50\text{mm}$

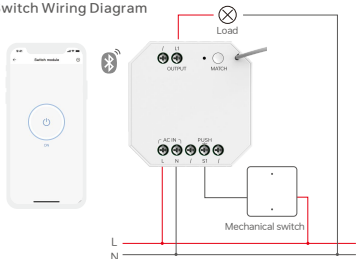
Product Size

Unit: mm

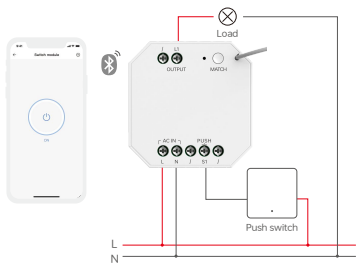


Wiring Diagram

1.Mechanical Switch Wiring Diagram

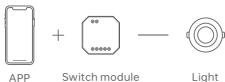


2.Push Switch Wiring Diagram

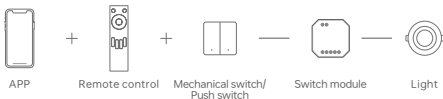


Recommended Applications

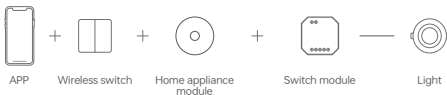
1. Wireless light control



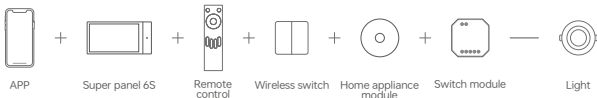
2. After setting up the remote control association with the switch module via the APP, both the APP and the remote control can be used to control the device.



3. Supports local scenes, gateway-free operation, and controllable even when offline.



4. Work with intelligent gateway, it can realize visual control, cloud scene and automatic linkage.



5. ...Intelligent control. Set up more app configs as you like.

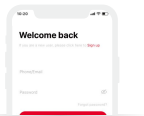
App Operating Instructions

1. Register an account

Scan the QR code below with your mobile phone and follow the prompts to complete the app installation.

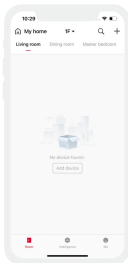


Scan code download APP
IOS/Android



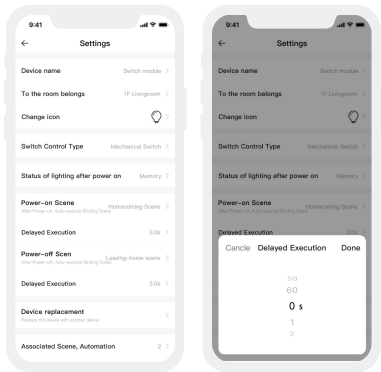
2. Pairing operation

After creating a new home in the APP, click the "+" in the upper right corner on the **【Room】** interface to add devices. Select "Smart Module" from the device list and follow the on-screen instructions to complete the addition.



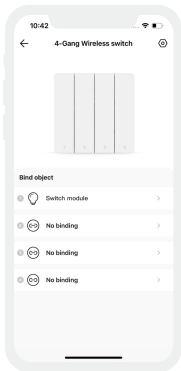
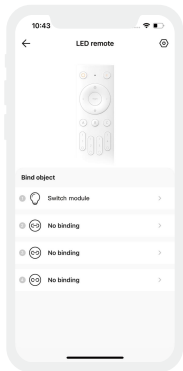
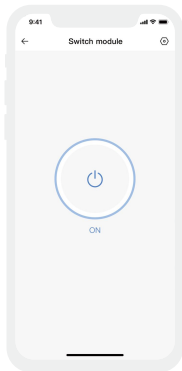
3. Power On/Off Scene Settings

On the settings page, you can configure the scenes to be executed when the device powers on or off, along with the execution times for these scenes.



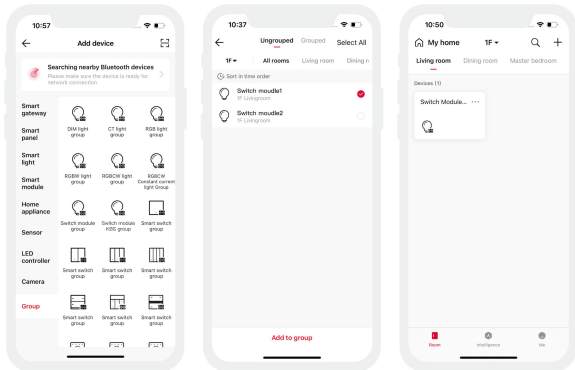
4. Binding Interface Settings

After pairing is complete, enter the Smart Remote/Smart Wireless Switch binding interface. Select the switch module device to associate it. You can then control the device's power state via the Smart Remote/Smart Wireless Switch. You may also unbind the device from this interface.



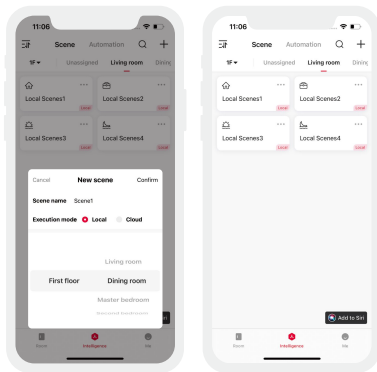
5. Group Control

Supports grouping identical switch modules or single switches from dual-channel relays (KBS) into clusters. Users can conveniently control power on/off operations for the entire group. To add a device, navigate to the device list, select "Group - Switch Module Group," modify the group name as prompted, click "Next," check the devices to include in the group, then save.



6. Local scene

Switch to the **【Smart】** page, click "+" in the upper right corner to create a local scene, and after setting the execution action, you can realize the local linkage of Bluetooth devices.

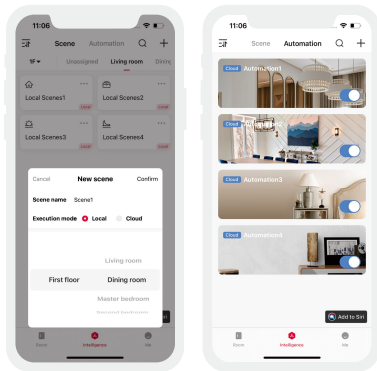


7. Cloud scenes and automation

Make sure that a smart gateway, such as SP-GW-6S, has been added to the family.

Cloud scenes: Switch to the **【Smart】** interface and click "+" to create a cloud scene. After setting the execution action, remote linkage can be achieved.

Automation: Select "Automation" in the **【Smart】** page and click "+" to create automation. You can choose local/cloud execution mode, and set trigger conditions and execution actions. When the set trigger conditions are met, a series of device actions are automatically triggered to achieve remote linkage

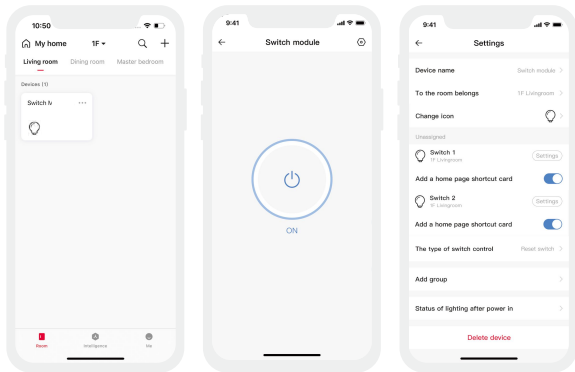


8. Reset to factory defaults

Mechanical Reset: Connect device to lighting fixture. Hold reset button for 15s until indicator light flashes red rapidly, then release. Press reset button 3 times briefly within 3s. Slow red flash means factory settings restored; rapid blue flash means setup is complete.

Power Cycle Reset: With the power disconnected, use the switch to power on the device for 15 seconds, then power off for 2 seconds. Repeat this power cycle six times (each cycle: 2 seconds on, 5 seconds off). After the seventh power-on cycle, the load lamp will flash three times, indicating a successful reset to factory settings.

APP Reset: Click the "..." on the switch module to enter the main interface, then click the "⊙" in the upper right corner to access the settings interface. Click "Delete Device" to complete the reset.



FAQ

What should I do if the device cannot be found during the search?

Please check the following options:

- Ensure the device is powered on and functioning properly.
- Ensure the phone and the device are as close as possible, preferably within 15 meters.
- Ensure the device has not been added before. If it has, please manually restore it to factory settings.

Attention

- Product installation and commissioning should be done by a qualified professional.
- Our company products are and not lightningproof non-waterproof(special models excepted). Please avoid the sun and rain. When installed outdoors, please ensure they are mounted in a water proof enclosure or in an area equipped with lightning protection devices
- Good heat dissipation will prolong the working life of products. Please ensure good ventilation.
- Please check if the working voltage used complies with the parameter requirements of products.
- The diameter of wire used must be able to load the light fixtures you connect and ensure the firm wiring.
- Before you power on products, please make sure all the wiring is correct in case of incorrect connection that causes damage to light fixtures.
- If a fault occurs, please do not attempt to fix products by yourself. If you have any question, please contact your suppliers.

Warranty Agreement

- Warranty periods from the date of delivery: 5 years.
- Free repair or replacement services for quality problems are provided within warranty periods.

Warranty exclusions below:

Following conditions are not within the guarantee range of free repairing or replacement services:

- Beyond warranty periods.
- Any artificial damage caused by high voltage, overload, or improper operations.
- Products with severe physical damage.
- Damage caused by natural disasters and force majeure.
- Warranty labels and barcodes have been damaged.
- No any contract signed by our company.

1. Repair or replacement provided is the only remedy for customers. Our company is not liable for any incidental or consequential damage unless it is within the law.
2. Our company has the right to amend or adjust the terms of this warranty, and release in written form shall prevail.

* This manual is subject to changes without further notice. Product functions depend on the goods. Please feel free to contact our official distributors if you have any question.