

LTECH

LR1 Infrared Remote



Manual
www.ltech-led.com

Product Introduction

LR1 is an infrared remote used for setting up the microwave motion sensor parameters. The remote uses a more intuitive segment code screen to view all parameters you set. Through the memory and storage function of the remote, you can store parameters when finishing the setting. Multiple application effects can be switched just with one key. The remote design makes operations more user-friendly.

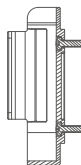
Technical Specs

Product name: Infrared Remote
Product model: LR1
Output signal: Infrared signal
Battery powered: 1.5V AAA battery(2-pack)
Standby power consumption: <1uA
Operating power consumption: Peak<40mA
Normal<10mA

Communication distance: ≤6 meters
Operating temperature: -20°C~50°C
Protection rating: IP20
Dimensions (LxWxH): 170x50x20mm
Package size (LxWxH): 173.5x55x28mm
Net weight: 99g

Installation Methods

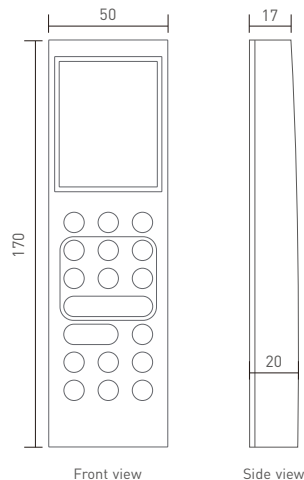
1. Free placement
Directly place the remote on any desktop or stick it to the wall with double-sided adhesive tape.
2. Screw installation
Fix the remote wall holder to the wall with ST3x10mm screws, then put the remote into the holder.



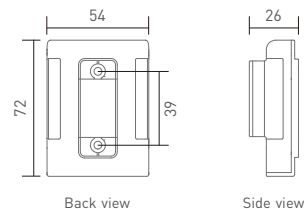
Product Size

Unit: mm

Remote



Remote wall holder

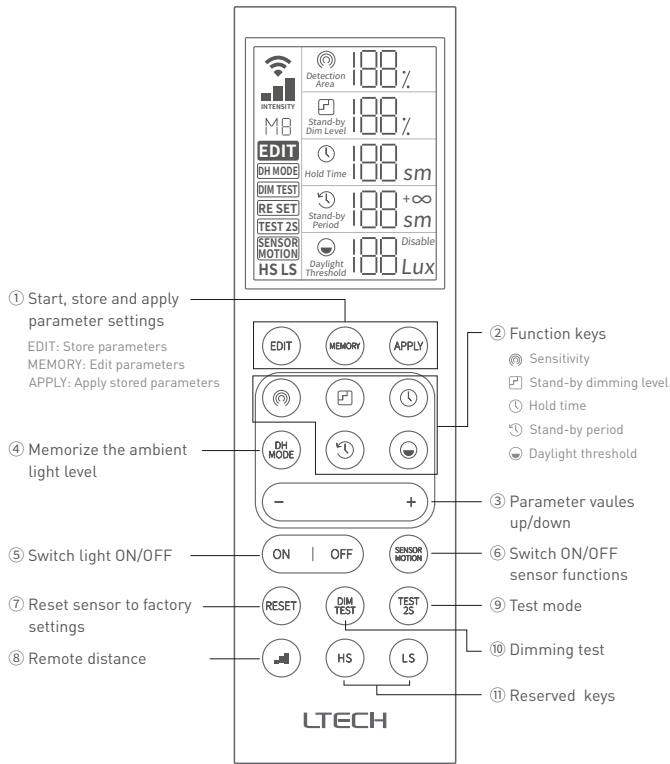


* This manual is subject to changes without further notice. Product functions depend on the goods. Please feel free to contact our official distributors if you have any question.



www.ltech-led.com

Remote Keys



1 Start, store and apply parameter settings

- Short press the "MEMORY" key and select a memory array you're going to edit. There is a total of 10 arrays from M0 to M9.
- Short press the "EDIT" key. When the "EDIT" icon lights up, you're ready for editing the parameters and can select any function keys to edit. "Sensitivity" icon flickering means the detection range is the first default parameter to be edited.
- Long press the "MEMORY" key to store the parameters in the selected array (If you give up this editing, short press the "EDIT" key to quit the editing and the parameters you set won't be saved).
- Short press the "APPLY" key to send the array data shown on the screen to the microwave motion sensor.

2 Function keys

- Short press the "Sensitivity" key to select the sensitivity, and the "Sensitivity" icon on the screen then flickers.
- Short press the "Stand-by dimming level" key to select the stand-by dimming level, and the "Stand-by dimming level" icon on the screen then flickers.
- Short press the "Hold time" key to select the hold time, and the "Hold time" icon on the screen then flickers.
- Short press the "Stand-by period" key to select the stand-by period, and the "Stand-by period" icon on the screen then flickers.
- Short press the "Daylight threshold" key to select the hold time, and the "Daylight threshold" icon on the screen then flickers.

3 Parameter vaules up/down

- Select any function key and short press that key to adjust its parameter value for the corresponding function.

4 Memorize the ambient light level

- Long press the "DH MODE" key for more than 5 seconds to memorize the current ambient light level as ambient light threshold, and the "DH Mode" icon on the screen then lights up always.
- Long press the key for more than 5 seconds again to quit the ambient light threshold mode and enter the daylight threshold mode. The daylight threshold is subject to the last setting and the "DH Mode" icon on the screen then doesn't light up (This feature is only for sensors that has the light sensing function)

5 Switch light ON/OFF

- Short press the "ON/OFF" key to automatically enter the normal mode. Under this mode, the sensor doesn't work and the connected load light can be turned on or off only, and the "SENSOR MOTION" icon on the screen doesn't light up.

6 Switch ON/OFF sensor functions

- Short press the "SENSOR MOTION" key to enable the microwave sensor functions. Under this mode, the sensor works (subject to the last setting) and the "SENSOR MOTION" icon on the screen lights up.

7 Reset sensor to factory settings

- Long press the "RESET" key for more than 6 seconds, all settings go back to the state that the microwave motion sensor has been set by dip switches and Bluetooth on the sensor is removed from the network. The "RESET" icon on the screen then flickers once.

8 Remote distance

- Set the remote distance for the microwave motion sensor.

9 Test mode

- Long press the "TEST 2S" key to enter the test mode. This mode is only for testing.

10 Dimming test

- Long press the "DIM TEST" key, the dimmable driver the microwave motion sensor connects to will automatically dim lights in order to test whether the wires is connected to the port correctly. The sensor will automatically go back to the last setting after the testing dimming of 2S.