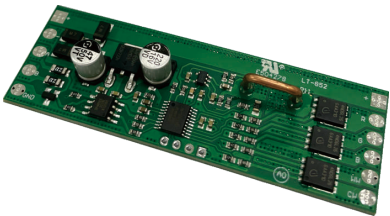


5 Channel DMX/RDM Decoder (CV)

- Standard DMX /RDM interface allows for flexible parameter setup;
- Ultra-small size meets diverse application demands;
- Smooth dimming curve, flicker-free dimming;
- Bare board design for easy integration into various lamps;
- DIM/CT/RGB/RGBW/RGBCW LED lamps are controllable;
- 5-channel output interface;
- Over-temperature, anti-reverse protection and self recovery.



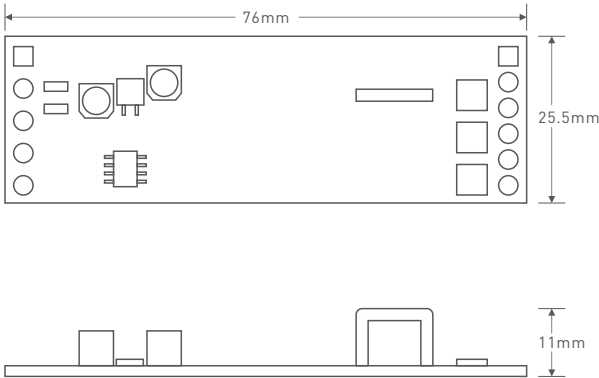
Product Parameters

Input Signal	DMX512, RDM
Input Voltage	5-24V $\overline{=}$
Output Type	Constant Voltage
Output Current	2A×5CH Max. 10A
Output Voltage	5×(5-24V $\overline{=}$ )
Output Power	50W@5V 120W@12V 240W@24V

Dimming Range	0-100%
Working Temp.	-25°C-50°C
Input & Output interface	Pad hole
Dimensions	L76×W25.5×H11mm
Weight	11g±3g
Protection	Over-temperature, anti-reverse protection and self recovery.

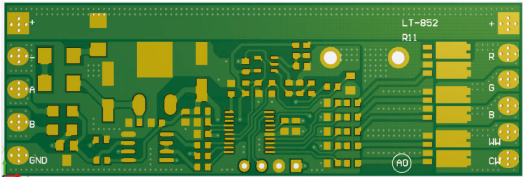
Product Size

Unit: mm

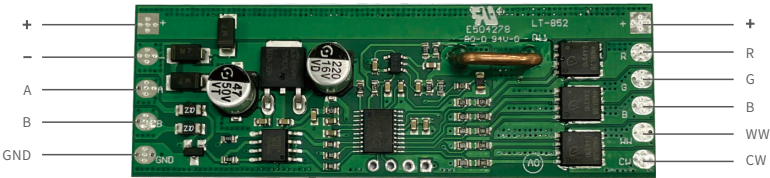


Terminal description

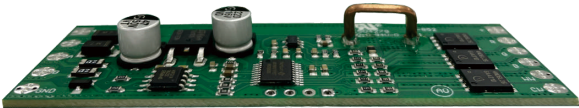
PCB board



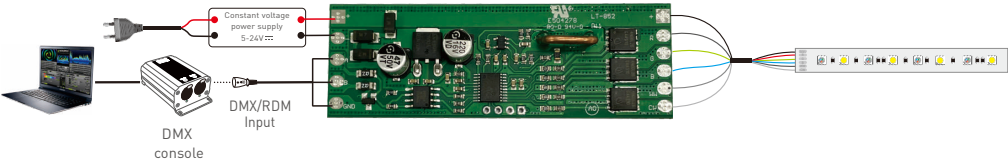
Main view



Side view



Wiring Diagram



## Attentions

- Product installation and commissioning should be done by a qualified professional.
  - LTECH products are and not lightningproof non-waterproof (special models excepted). Please avoid the sun and rain. When installed outdoors, please ensure they are mounted in a water proof enclosure or in an area equipped with lightning protection devices.
  - Good heat dissipation will extend the life the product. Please install the product in a environment with good ventilation.
  - When you install this product, please avoid being near a large area of metal objects or stacking them to prevent signal interference.
  - Please keep the product away from a intense magnetic field, a high pressure area or a place where lightning is easy to occur.
  - Please check whether the working voltage used complies with the parameter requirements of the product.
  - Before you power on the product, please make sure all the wiring is correct in case of incorrect connection that may cause a short circuit and damage the components, or trigger a accident.
  - If a fault occurs, please do not attempt to fix the product by yourself. If you have any question, please contact the supplier.
- \* This manual is subject to changes without further notice. Product functions depend on the goods. Please feel free to contact our official distributors if you have any question.

## Warranty Agreement

Warranty periods from the date of delivery : 5 years.

Free repair or replacement services for quality problems are provided within warranty periods.

Warranty exclusions below:

Following conditions are not within the guarantee range of free repairing or replacement services:

- Beyond warranty periods.
  - Any artificial damage caused by high voltage, overload, or improper operations.
  - Products with severe physical damage.
  - Damage caused by natural disasters and force majeure.
  - Warranty labels and barcodes have been damaged.
  - No any contract signed by LTECH.
1. Repair or replacement provided is the only remedy for customers. LTECH is not liable for any incidental or consequential damage unless it is within the law.
  2. LTECH has the right to amend or adjust the terms of this warranty, and release in written form shall prevail.